

CERTIFICATE OF LOCATION OF GOVERNMENT CORNER

NORTH 1/4 Corner of Section 31, Township 105N, Range 42W, 5th P.M.

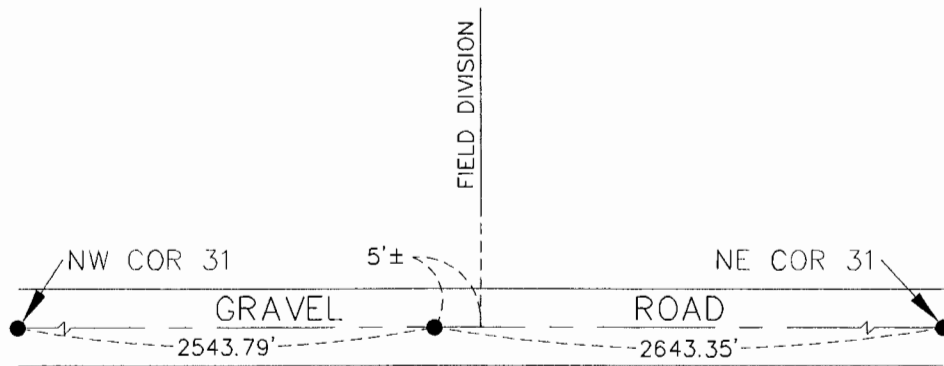
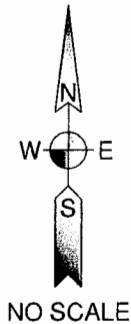
STATE OF MINNESOTA, County of MURRAY

At the corner location shown on the sketch:

On 2-13-08 found a 3/4" IRON PIPE
DATE

left monument as found, lowered monument, removed monument (explain)
 On _____ placed a _____
DATE

SKETCH OF REFERENCE TIES



DOWNED BARBED
WIRE FENCE

MURRAY CO. COORDINATES

N. 105613.57
E. 455735.68

NO OTHER TIES AVAILABLE
 BEARING SYSTEM IS BASED ON MURRAY COUNTY COORDINATES

Statement of evidence relative to this corner location is on back of page.

I hereby certify that this document and the data contained herein was prepared by me or under my direct supervision.

[Signature] 2-26-08
SURVEYOR'S NAME DATE

Registration No. 40827

- Land Surveyor, Professional Engineer
 County Surveyor, County Engineer

OFFICE OF THE COUNTY RECORDER

County of MURRAY

I hereby certify that this document was filed in the Co. Recorders office at _____ M. on the _____ day of _____ A.D., 20____

County Recorder [Signature], Deputy

DOCUMENT NO. MAR 18 2008

STATEMENT OF EVIDENCE:

 NORTH 1/4 CORNER, SECTION 31 , T. 105 N., R. 42 W.,
 MURRAY COUNTY, MINNESOTA

- 1861 D.W. Wellman & S.S. Smoot, U.S. Deputy Surveyors, monumented corner.
- 2008 Ulteig Engineers, Inc., Survey Crew, Jay Johnson Party Chief, found a ¼" iron pipe.
Ties: W-2543.79' to the Northwest corner of Sec 31;
 E-2643.35' to the Northeast corner of Sec. 31;
 E-5'+/- to the extension of a field line north.